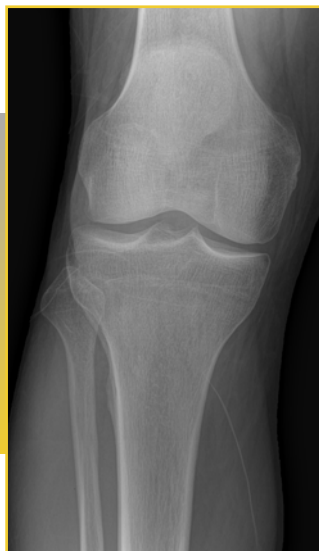


FERREX DR A43 MED

OPTIMIZE YOUR WORKFLOWS WITH THE FERREX FLAT PANEL SYSTEM!

RETROFIT SOLUTION FOR YOUR X-RAY ROOM



The Ferrex **DR A43 Med** is the worldwide first carbon neutral flat panel digital X-Ray detector designed for general radiology applications. The panel will be delivered as complete solution including:

- ✓ Flat Panel
- ✓ Acquisition Workstation
- ✓ Touchscreen
- ✓ PACS-System
- ✓ 3 Terra Byte Storage Capacity

SPECIFICATIONS

Flat Panel Detector

Sensor:	a-Si TFT array Flat Panel Detector
Conversion screen:	CsI: TI / DRZ (premium Gd2O2z: Tb)
Sensor pixel:	3072 x 3072 pixels (9.4M pixels)
Pixel pitch:	143 microns
A/ D conversion:	14 bits
Image preview:	approx. 0,8 sec
Capture cycle time:	3 sec (come under user setting)
Interface:	Gigabit Ethernet (Auto 1000/100/10M Base T)
Voltage:	AC 90-240V / 50/60Hz
Power consumption:	max. 35VA
Limiting resolution:	3.5 lp/mm
Environment:	-20°C ~ 60°C, 10% ~ 90% RH +10°C ~ +35°C, 20 ~ 75% RH
Dimensions:	500 x 500 x 40 mm
Weight:	12,7 kg

High Quality Images:

SensoPoint technology for excellent raw data, low noise and high dynamic range at very low dose.

Modular Structure:

The Ferrex **DR A43 Med** can interface to your X-Ray system easily and securely with minimum integration effort.

Active Capture Size:

Automatic sizing up to 439 x 439 mm.

Docking Station:

Docking station designed for high and robust routine productivity.



FERREX GmbH

Lindhorststr. 193 - D 46242 Bottrop - Tel. +49 (0)2041-47503-13, Fax +49 (0)2041-47503-21

www.ferrex-gmbh.de

www.pss-gruppe.de

www.dicom-cr.com

